



Tax Map ID(s)	R14500-02-24
Park Status	Midlands Technical College Enterprise Cam
Municipality	Within City Limits
Zoning	PUD - LS Zoning Present
Flood Zone Status	No Portion is located in a Flood Zone
Landuse	Educational Facility(N), Industrial / Distribution(S), Industrial / Distribution(E), Agricultural Land(W)
Location	Located at 151 Powell Road and within 1.14 miles of I-77 and 2.0 miles from

**Site Details:**

Total Site Acreage	132.00
Developable Acreage	126
Addtl. Acreage Avail	None
Min. Divisible Acreage	3
Max. Contig. Acreage	60
Max. Building Size	400,000 SF
Improvements	Cleared
Number of Structures	0
Elevation Range	275' to 391'
Primary Soil Type	Loam

**Pricing:**

Sales Price	\$65,000 Per Acre
BTS Lease Rate	Not Available for BTS to Lease
Land Lease Rate	Sale Only

**Completed Due Diligence Items:**

- Cultural Resource Identification Survey
- Boundary Survey
- Protected Species Assessment
- Preliminary Geotechnical Exploration
- Phase I Environmental Protection Agency Site Assessment
- Topographical Survey
- Wetlands Approximation
- Wetlands Delineation

**Other Features:**

SC Certified Site	Yes
Foreign Trade Zone	No
Multi-County Property	No



**Property Description:**



**Utilities:**

Water System

Provider	City of Columbia
Nearest Line Size	12"
Dist. to Nearest Line	On-Site

Wastewater System

Provider	City of Columbia
Nearest Line Size	8" (Gravity)
Dist. to Nearest Line	On Site

Natural Gas/Alternate Gases

NG Provider	SCE&G
Nearest Line Size	4" (Distribution)
Dist. to Nearest Line	On-Site
Alternate Gases	None Available

Telecomm. Provider AT&T

Electric Provider SCE&G

**Transportation:**

Road Serving Site Powell Road (2 Lanes)

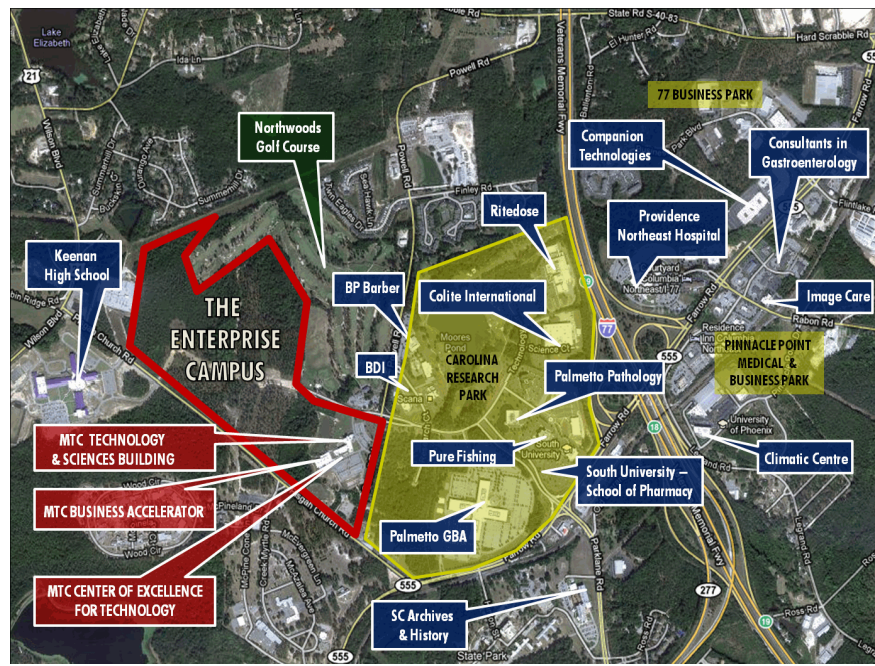
Nearest

Interstate	I-77 (2 MI)
Port	Charleston (123 MI)
Commercial Airport	Columbia Metro (16 MI)
Intermodal Facility	NS Charlotte (87 MI)/CSX Charlotte (93 MI)

Barge Access No

Rail Access No

Runway Access No



BSFlierImageDefault.jpg (Command Line)