

SCE&G PROPERTY FOR SALE

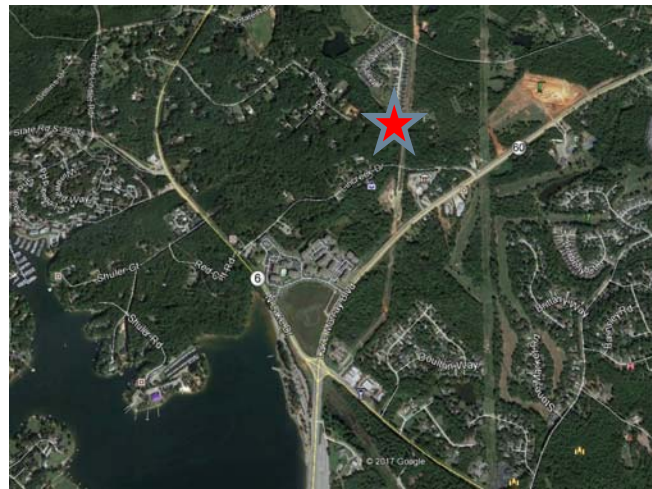
Lincreek Drive Tract – 10.89 acres

Columbia, SC



Acreage: 10.89 acres
Type: Flat and rolling timberland
Zoning: Low Density Residential (R1)
School: Lexington / Richland District 5

Water: City of Columbia
Sewer: Richland County
Lexington County Tax Map#: 002697-03-013



Contact Information

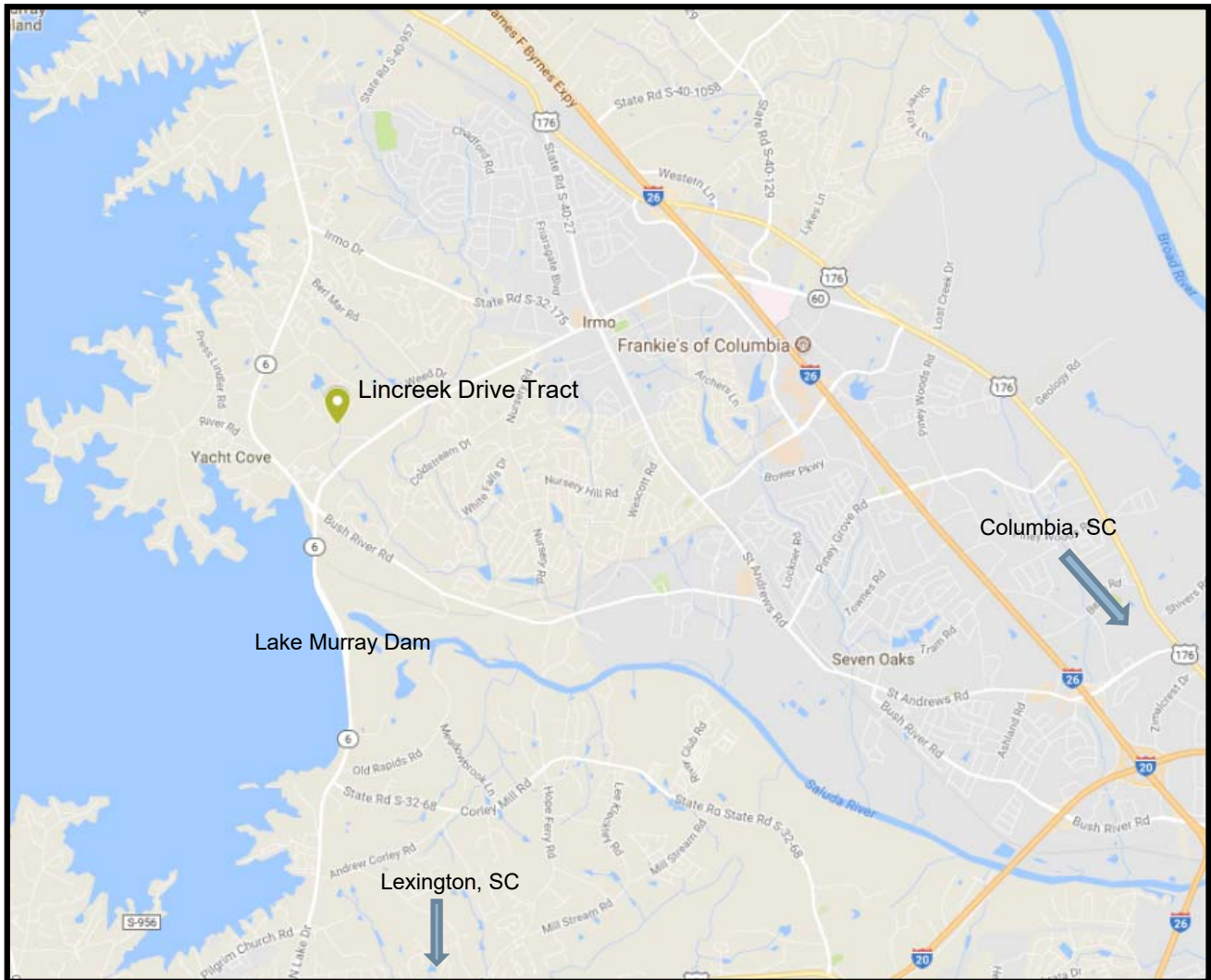
SCANA Corporation \ Real Estate Department (D112) \ 220 Operation Way
Cayce, SC 29033 \ 803-217-9171 \ www.scana.com/land



SCE&G PROPERTY FOR SALE

Lincreek Drive Tract – 10.89 acres

Columbia, SC



Contact Information

SCANA Corporation \ Real Estate Department (D112) \ 220 Operation Way
Cayce, SC 29033 \ 803-217-9171 \ www.scana.com/land

